

TRUCK, UTILITY, 1/4 TON, GS, LANDROVER, SERIES 2

(FITTED FOR RIFLE 106 MM)

WEAPON CLIPS

MODIFICATION INSTRUCTION

REFERENCE:- AO in WM No 23046/8.

SUMMARY

1. This instruction details the fitting of weapon clips to permit the L1A1 sub-machine gun and L2A1 automatic rifle to be carried on the vehicle.
Estimated manhours to perform: 2.5
2. Priority: Group 2
3. Vehicles affected:
Subject vehicles.
4. Items affected:
Gearbox cover, engine compartment bulkhead, driving compartment rear bulkhead
5. Action required: By RAEME workshops authorised to carry out field repair in accordance with WKSP A 850.
6. Stores required: (Availability of stores is through normal channels).

Stock No	Designation	Qty per Eqpt
2590-66-025-5300	KIT, MODIFICATION, RIFLE STOWAGE comprising:-	1
2590-66-025-5295	SOCKET, RIFLE, muzzle, ADE(A)60-10A	(1)
2590-66-025-5296	CLIP, RIFLE, assembly, ADE(A)60-11A	(1)
2590-66-025-5297	HOUSING, SUPPORT, BUTT, ADE(A)60-13B	(1)
2590-66-025-5298	BRACKET, CLIP, ADE(A)60-12A	(1)
NIV	RIVETS, POP, Tucker Type TLP/D/636BS	(12)

DETAIL

7.
 - a. Cut a 1 5/8 inch diameter hole in the panel behind the driving seat in the position as detailed in fig 1.
 - b. Mark the rivet holes on the cross member using the Socket, rifle, muzzle as a template.
 - c. Drill the holes using a No 11 drill (.191 inch) and pop rivet the socket in position.
NOTE:- The No 11 drill (.191 inch) is to be used throughout.
 - d. Position the Bracket, clip (fig 1) on the panel and using it as a template, mark the rivet holes.
 - e. Drill the holes and rivet the bracket in position.
 - f. Rivet the Clip rifle assembly to the Bracket clip.
 - g. Using the Housing support butt as a template, mark out the rivet holes on the gearbox cover and the bulkhead as shown in fig 1.
 - h. Drill the rivet holes and rivet the support in position.
8. Paint in accordance with WKSP B 700.
9. On completion of this modification, the numeral "2" on the modification record plate is to be defaced in accordance with WKSP A 851.

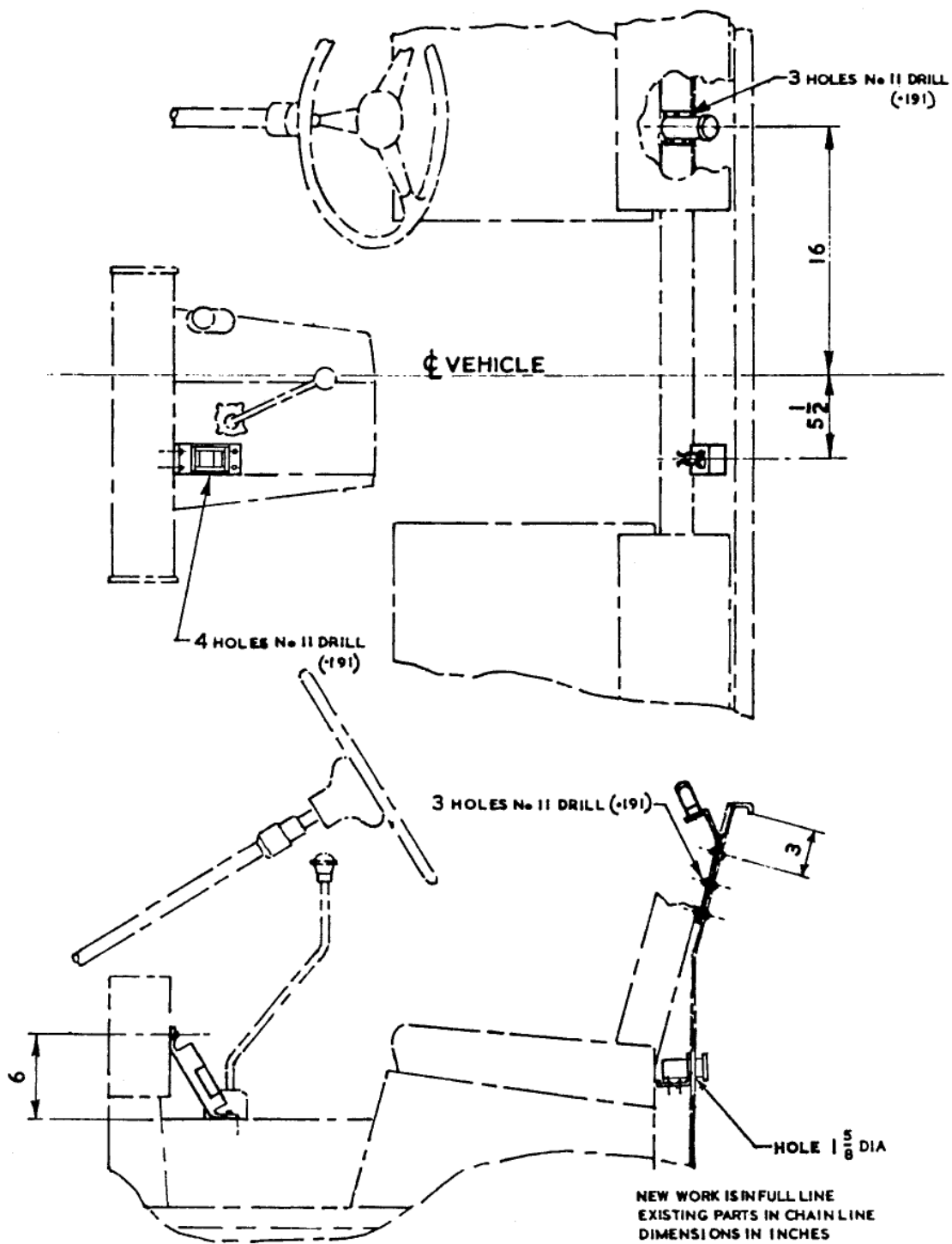


FIG 1 - WEAPON CLIP, FITTING DETAIL

E N D